

ClassScape And The Classroom Performance System

Did you know that you don't have to schedule assessments in ClassScape? You can use the vast question database right in the comfort of your own classroom. And when you combine ClassScape and CPS it makes for a powerful Formative Assessment Tool.

To begin, you will need to confirm you have the CPS software installed and have a class set up. If you have trouble with this see your Media Coordinator or Teacher Coach.

Part 1- Opening An Assessment In ClassScape

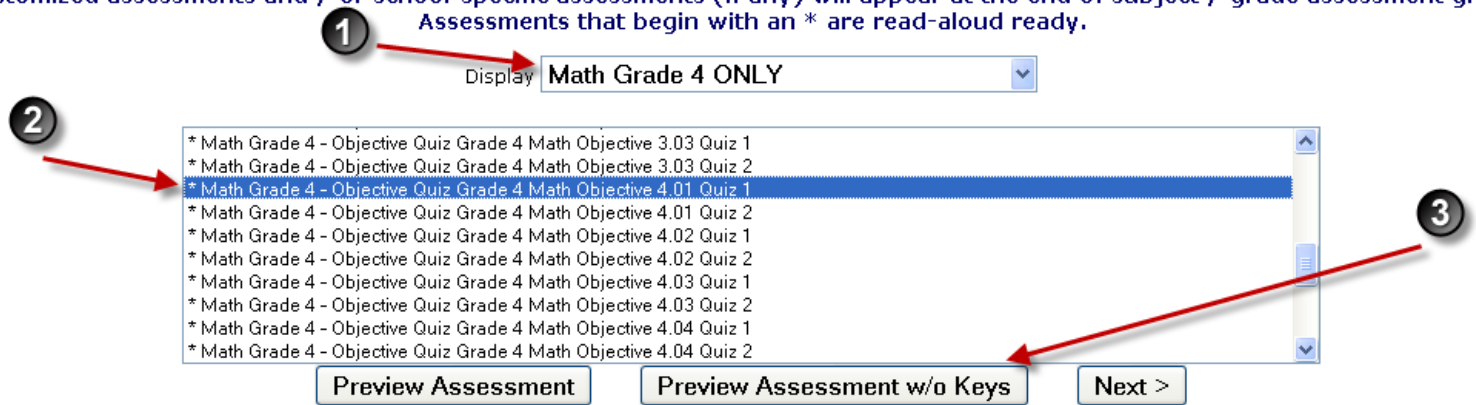
Step 1- Log in to ClassScape (<http://www.classscape.org>). Choose your role. (If you have more than one you will need to chose the role most appropriate for the assessment you want to do; i.e. If you want to do a Math Assessment you need to go in under your Math role.)

Step 2- Under the Assessments Tab, click *Schedule Assessment*.



Step 3- On the next screen, choose your *Subject Area* (1) (if applicable), the *Assessment by Objective* (2), and then click *Preview Assessment w/o Keys* (3).

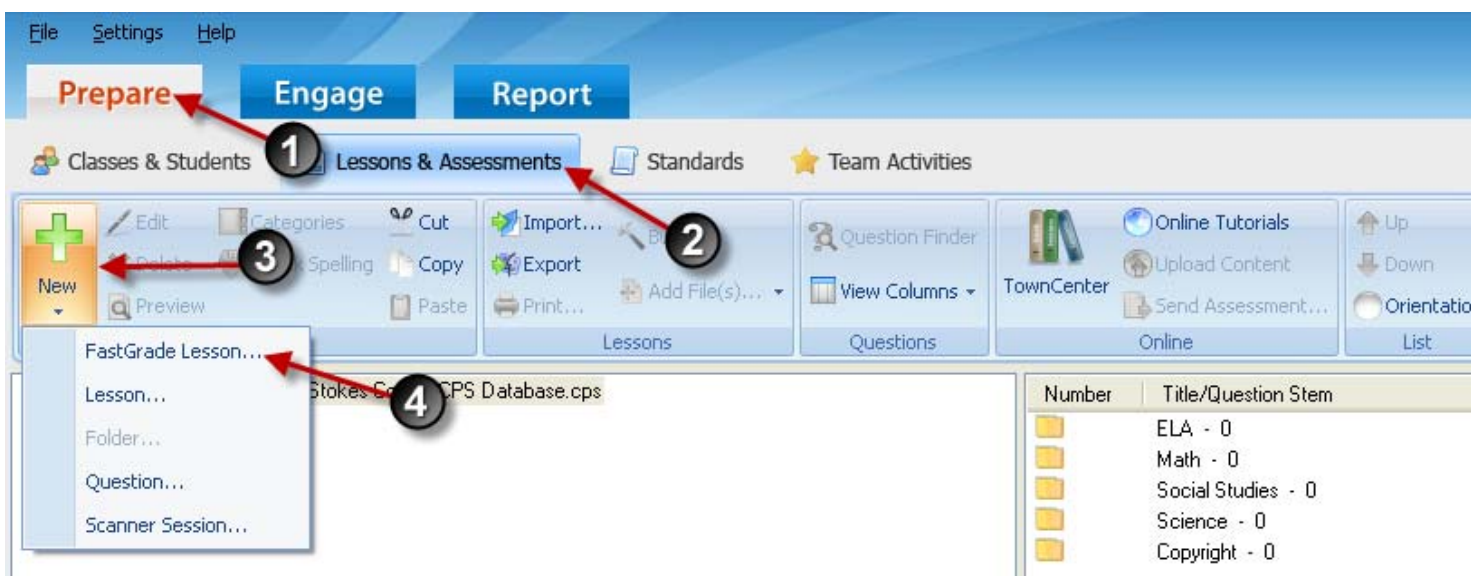
Please select an assessment from the list below and press the Next button.
 customized assessments and / or school-specific assessments (if any) will appear at the end of subject / grade assessment group.
 Assessments that begin with an * are read-aloud ready.



Step 4- You should see a preview of the Assessment. Once it opens write down all the correct answers, just the letter (You can open the *Preview Assessment* if you want to just have the answers without having to figure them out.) When done don't close it, just minimize it so it's out of the way for now.

Part 2- Set Up The CPS

Step 1- Open a CPS Database. On the *Prepare Tab* (1), under *Lessons and Assessments* (2) click *New* (3) then click *New Fast Grade Lesson* (4).



Step 2- In the Lesson Attributes Box, fill in the Title and a Description. Leave all other information blank. Then click OK.

CPS - Lesson Attributes

Parent: Instructional Technology Stokes County CPS Database.cps

Title:

Description:

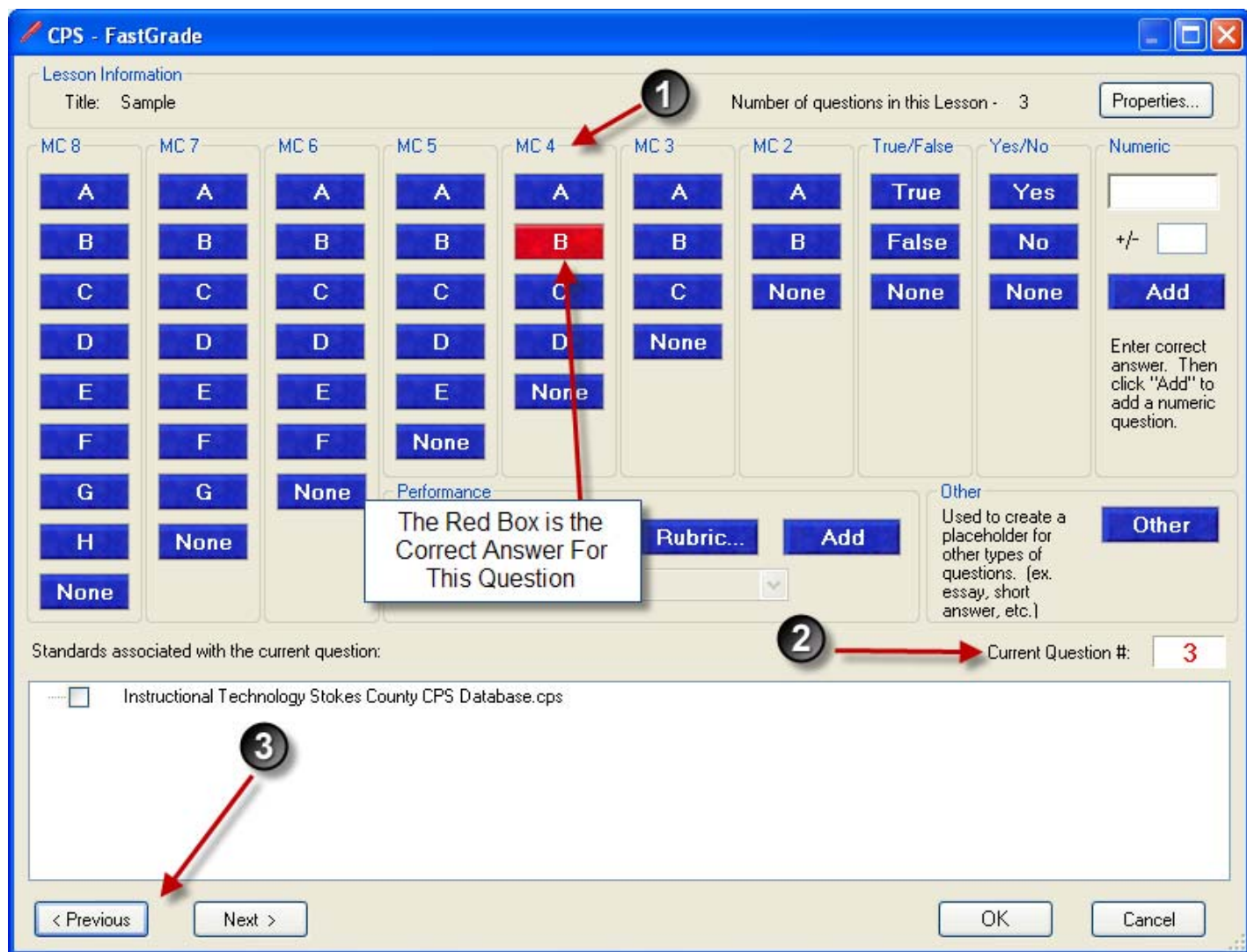
Unique Identifier:

Delivery Style (Only for Student Paced Assessments): All Answer Types

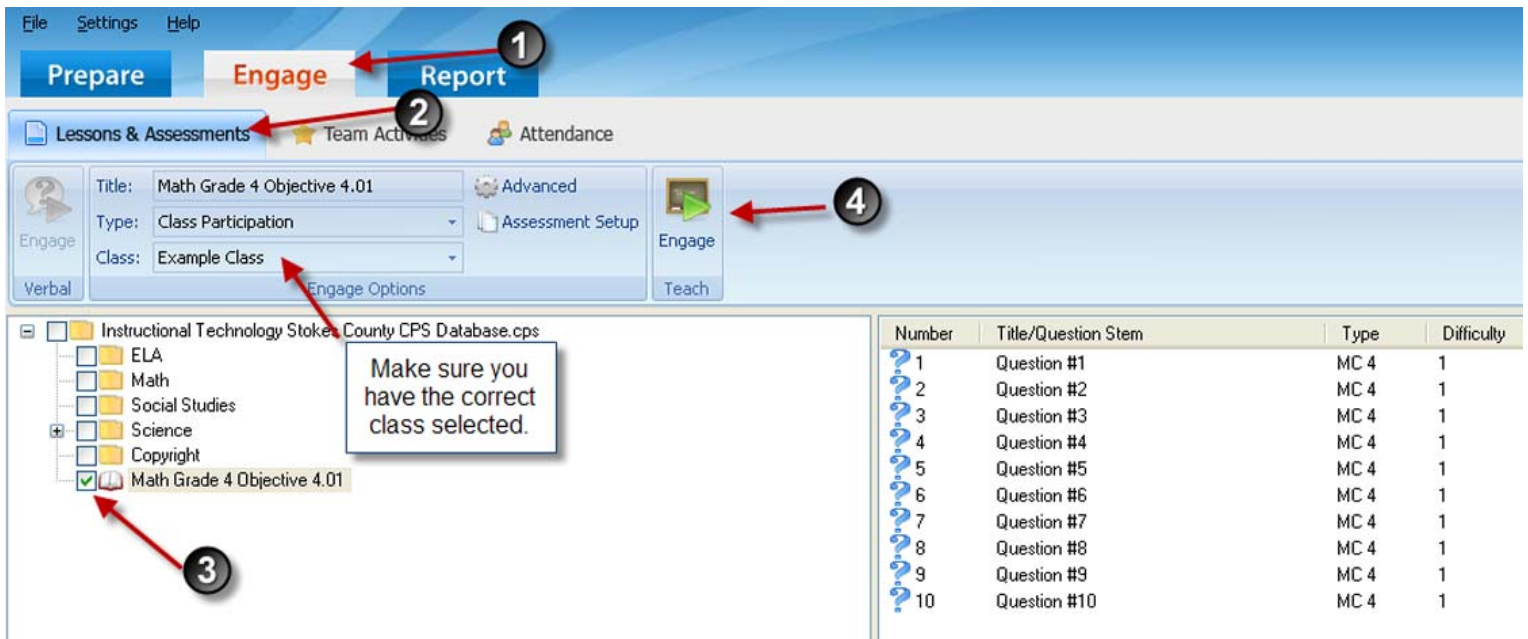
Associated File:
 Browse...

OK Cancel

Step 3- You should see the Fast Grade Screen. This is where you will need the correct answers you wrote down earlier. A fast grade allows you to input correct answer choices without having to actually type in the questions. Since ClassScape has four, A-D answer choices, we will focus on the MC4 Column (1). Here, you just click the correct answer choice. Notice at the bottom of the screen your Current Question # will go up (2). So if your ClassScape Quiz has 10 questions, the Current Question # should be 11, meaning you have recorded 10 answer choices when you have entered them all. You can use the *Previous* and *Next* buttons (3) at the bottom of the screen to review your answer choices. When done, click OK.

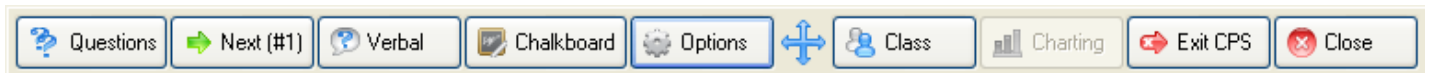


Step 4- On the *Engage Tab* (1) under *Lessons and Assessments* (2), place a check mark next to the ClassScape quiz (3) you created it Steps 1 and 2, confirm you have the correct class selected, then click *Engage* (4).

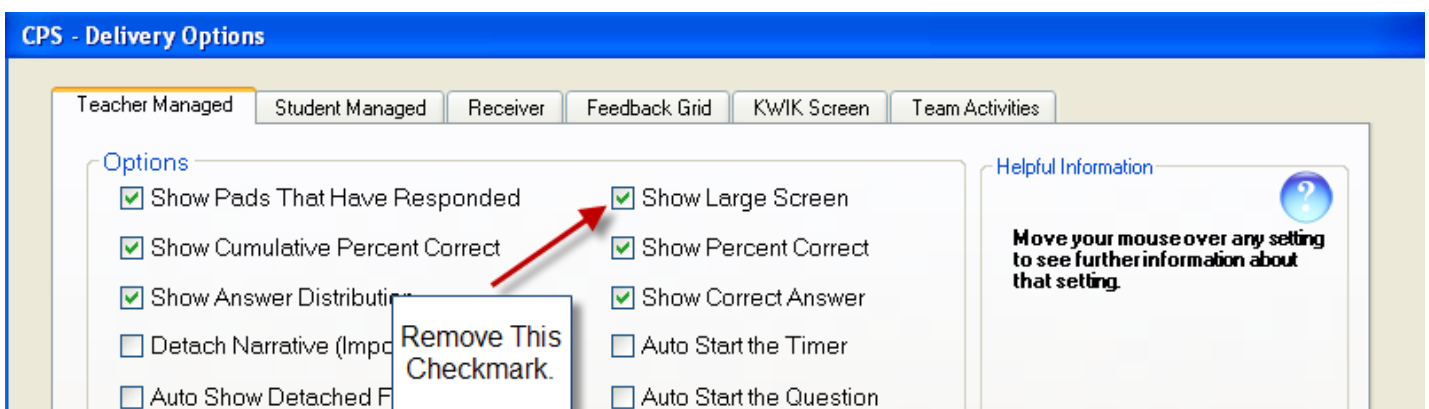


Part 3-Engaging The Lesson

Step 1- When you click Engage, CPS will automatically minimize and you will see the CPS Engage Bar at the top of your screen.



Before you begin your lesson, click Options. Under the Teacher Managed Tab, remove the checkmark beside *Show Large Screen*. (This will allow you to see both the CPS Bar and the ClassScape Question.) When done, click OK.



Step 2- Click *Next* (#1) on the CPS Engage Bar and bring back your ClassScope Questions. You should see the *Content Deliver* Box. Then click *Start*.



Step 3- From here students can now press the correct answer on their clicker. The box will turn green once a selection has been made. When all students have responded, click *End*. You can then show the correct answer and the number of answers per each answer choice. When you are ready to go to the next question, click *Next*. You will also need to go to the next item in ClassScope.

The screenshot shows the ClassScope interface in a Mozilla Firefox browser. At the top, there's a 'Content Deliver' window with a timer set to 1:00 and a grid of 25 question slots. Below this, it says 'Item 1 of 10'. The main content is a bar graph titled 'Holtville's Average Daily Temperatures During a Week'. The y-axis is labeled 'Degrees Farenheit' and ranges from 0 to 18. The x-axis is labeled 'Days' and lists Sun., Mon., Tue., Wed., Thu., Fri., Sat. The bars represent the following temperatures: Sun. (14), Mon. (10), Tue. (12), Wed. (16), Thu. (10), Fri. (8), Sat. (8). Below the graph is a question: 'Which gives the temperature averages from warmest to coldest?'. There are four multiple-choice options: (A) Monday, Tuesday, Wednesday, Thursday; (B) Sunday, Monday, Tuesday, Wednesday; (C) Wednesday, Sunday, Monday, Tuesday; (D) Wednesday, Sunday, Tuesday, Monday.

Which gives the temperature averages from warmest to coldest?

(A) Monday, Tuesday, Wednesday, Thursday

(B) Sunday, Monday, Tuesday, Wednesday

(C) Wednesday, Sunday, Monday, Tuesday

(D) Wednesday, Sunday, Tuesday, Monday

When you have completed, click End. You should be back at the CPS Engage Bar where you can *Exit CPS* or just *Close*, which takes you back to the main CPS. Program.



When you have completed your lesson you can now go to the Reports tab. There you can get a question-by-question breakdown for each student along with other valuable information that really makes ClassScape great for Formative Assessments. And you didn't have to take your students anywhere!

Contact:

Delilah Brady

Technology Facilitator

Stokes County Schools

delilah.brady@stokes.k12.nc.us